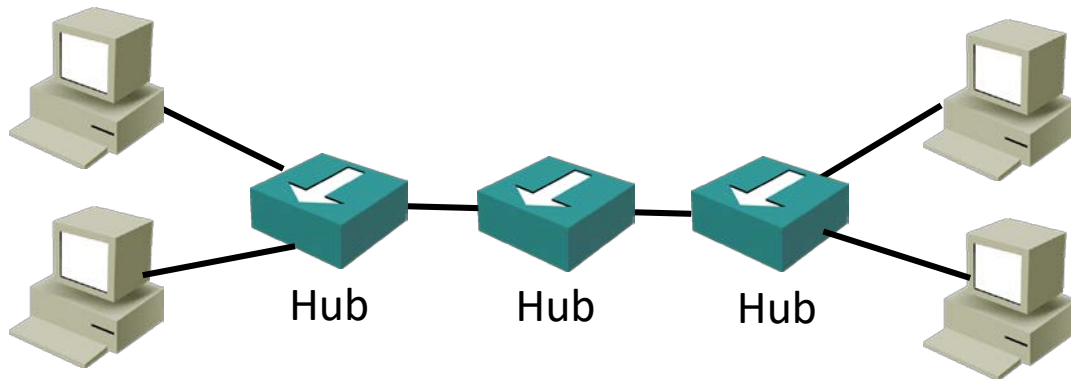


STP Terminology – The Bridge

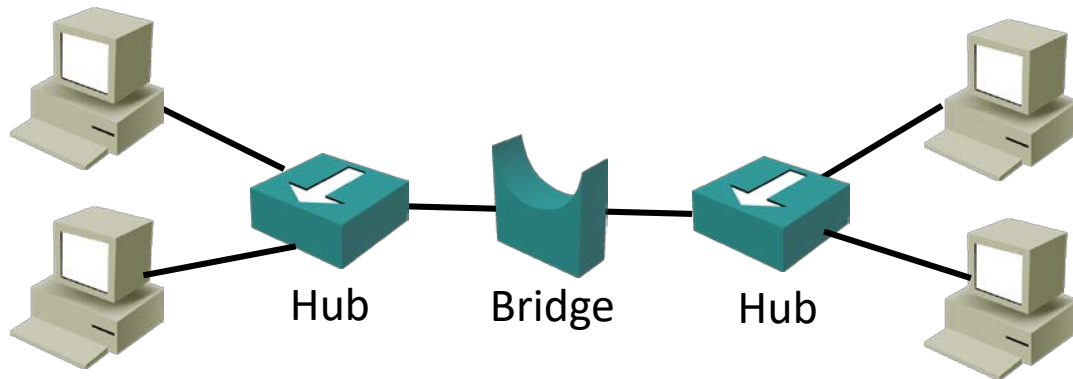
- Hubs were Layer 1 devices which performed the same function as switches – connecting Ethernet LAN hosts
- Hubs did not learn MAC addresses so they flooded all traffic out all ports apart from the one it was received on



STP Terminology – The Bridge



- Switches provide performance and security improvements by only forwarding traffic to known unicast MAC addresses out the relevant port
- Early switches were expensive, had very few ports and were called bridges
- They segmented LANs which were built with hubs



STP Terminology – The Bridge

- A switch is a multi-port bridge
- Spanning Tree was invented back when bridges were in use so it uses that terminology (the 'Root Bridge' and 'Bridge Protocol Data Units')

