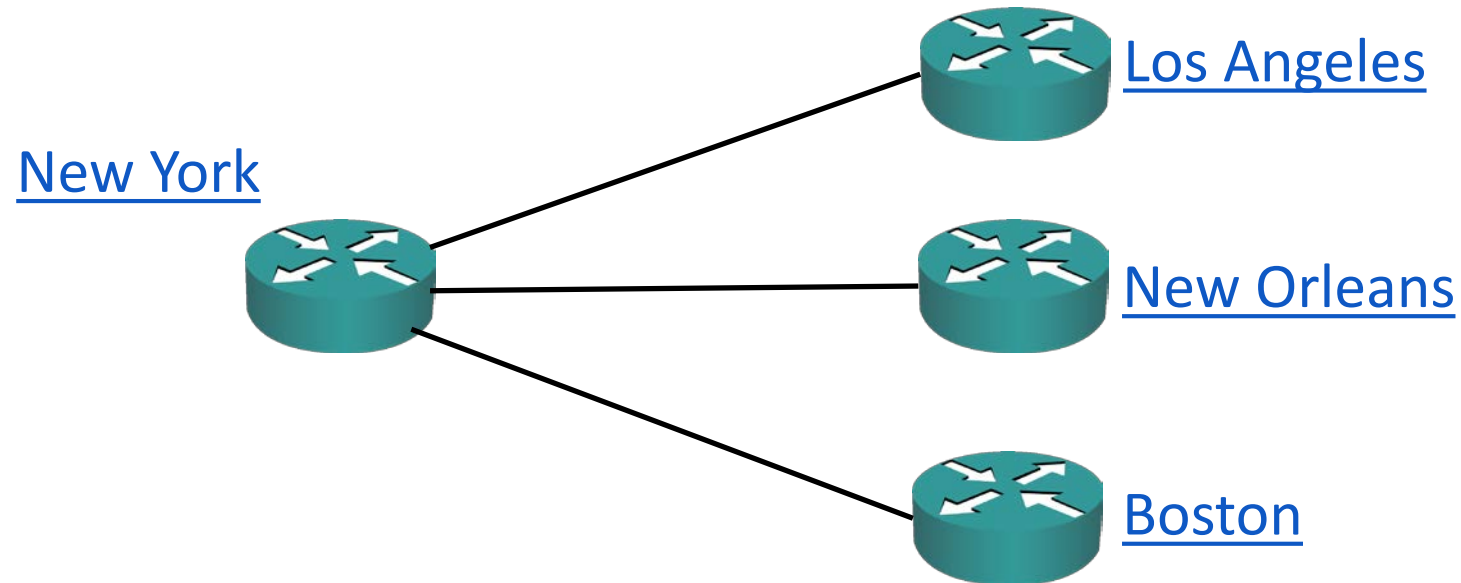
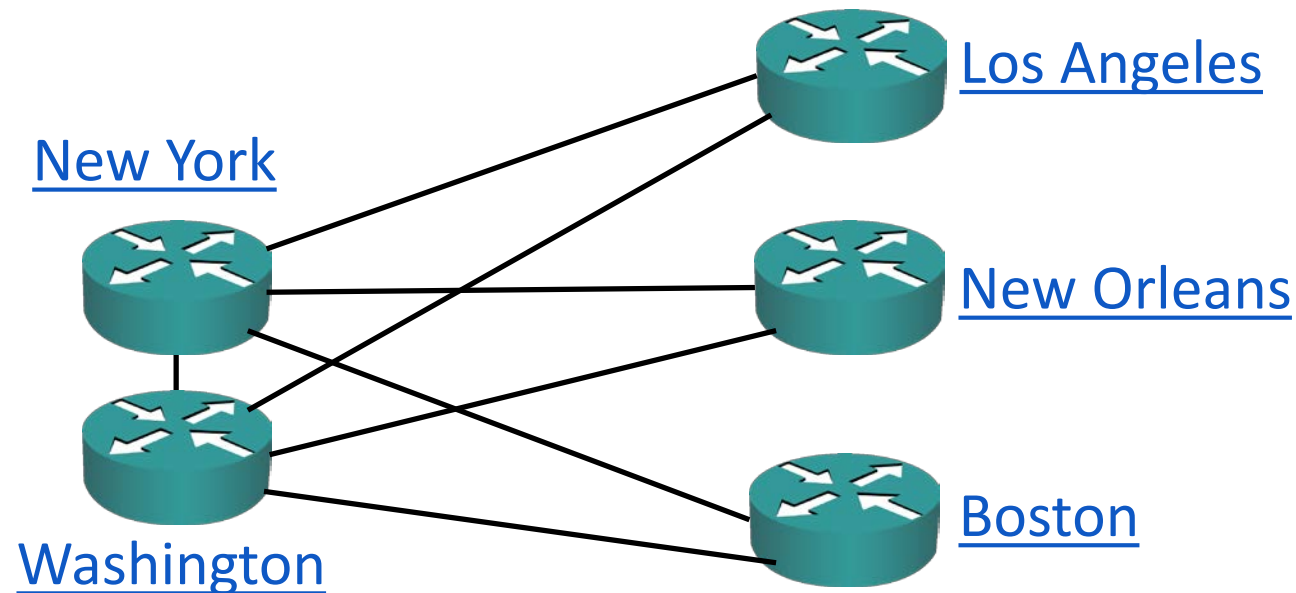


Topology Options – Hub and Spoke (Star)



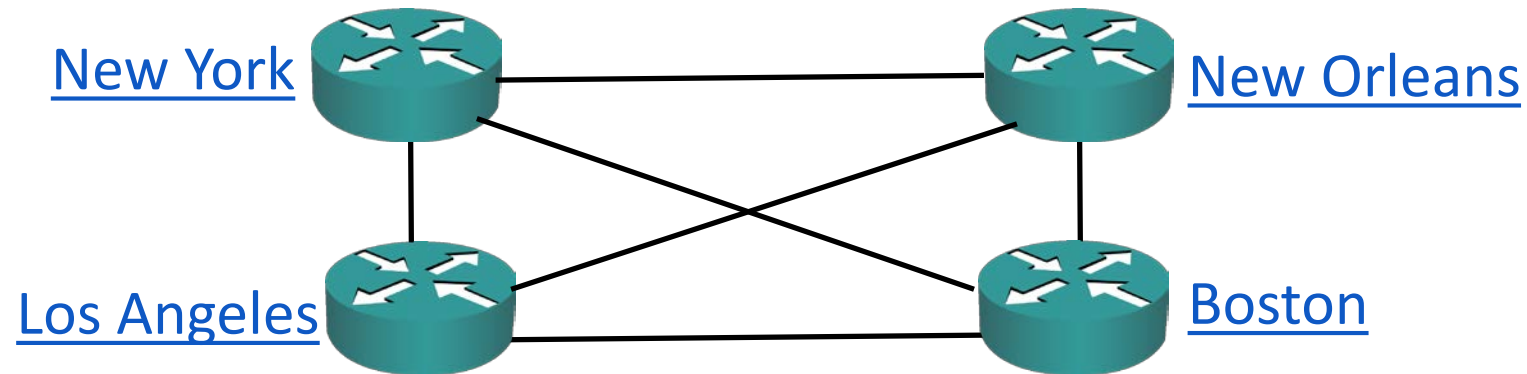
- Advantages: Simplicity, centralised security policy
- Disadvantages: Single point of failure, suboptimal traffic flow

Topology Options – Redundant Hub and Spoke



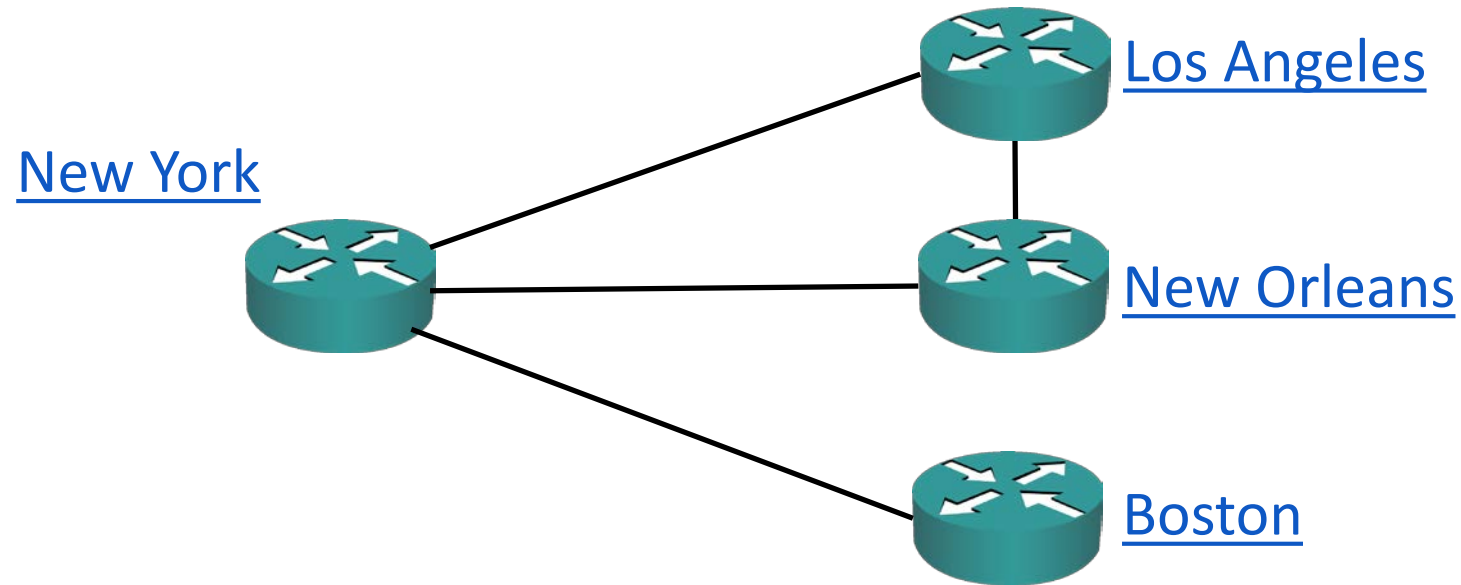
- Advantages: Removes single point of failure, centralised security policy
- Disadvantages: Higher cost, suboptimal traffic flow

Topology Options – Full Mesh



- Advantages: Optimal traffic flow
- Disadvantages: Higher complexity and cost

Topology Options – Partial Mesh



Internet Redundancy Options

