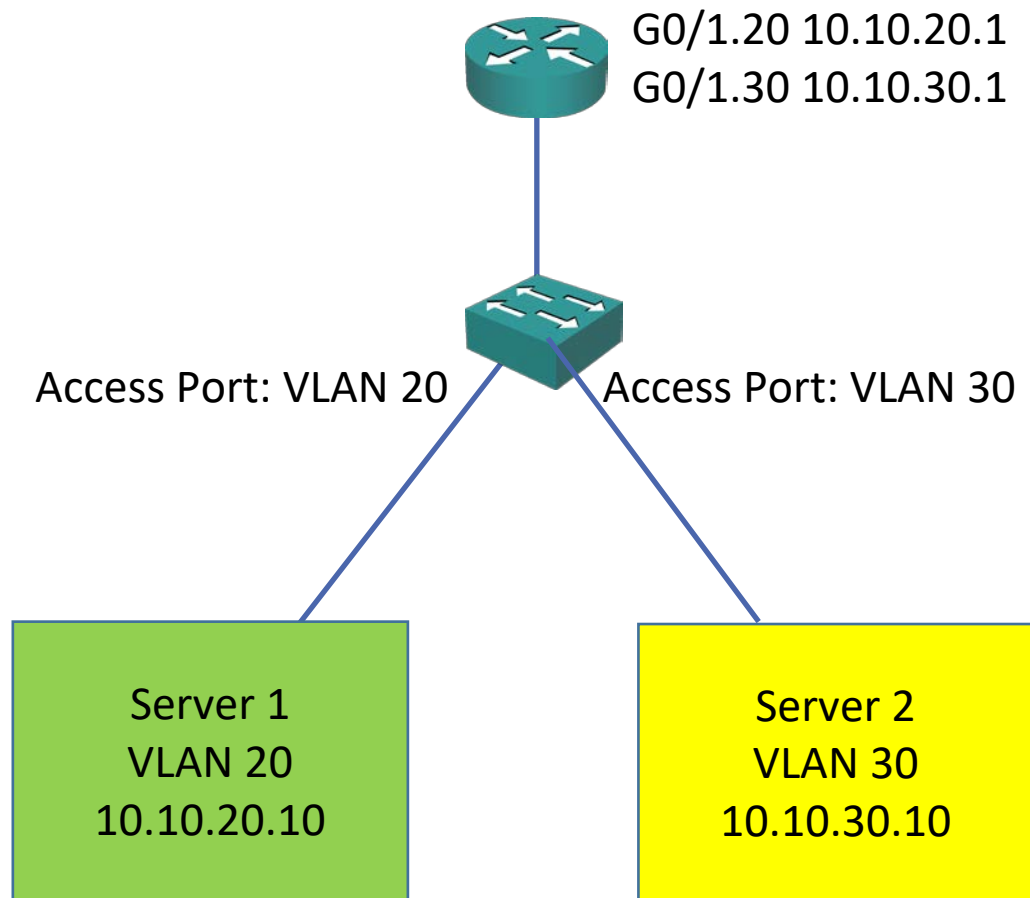
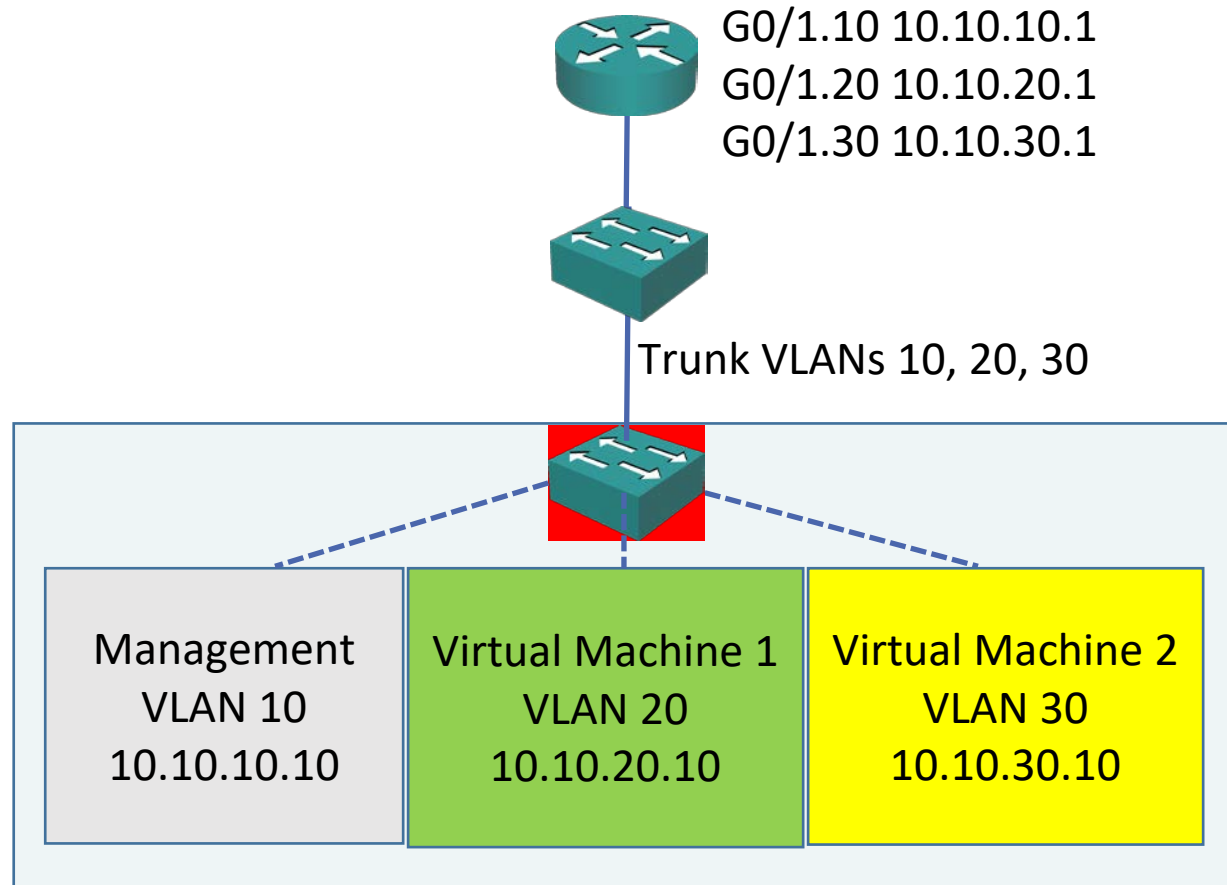


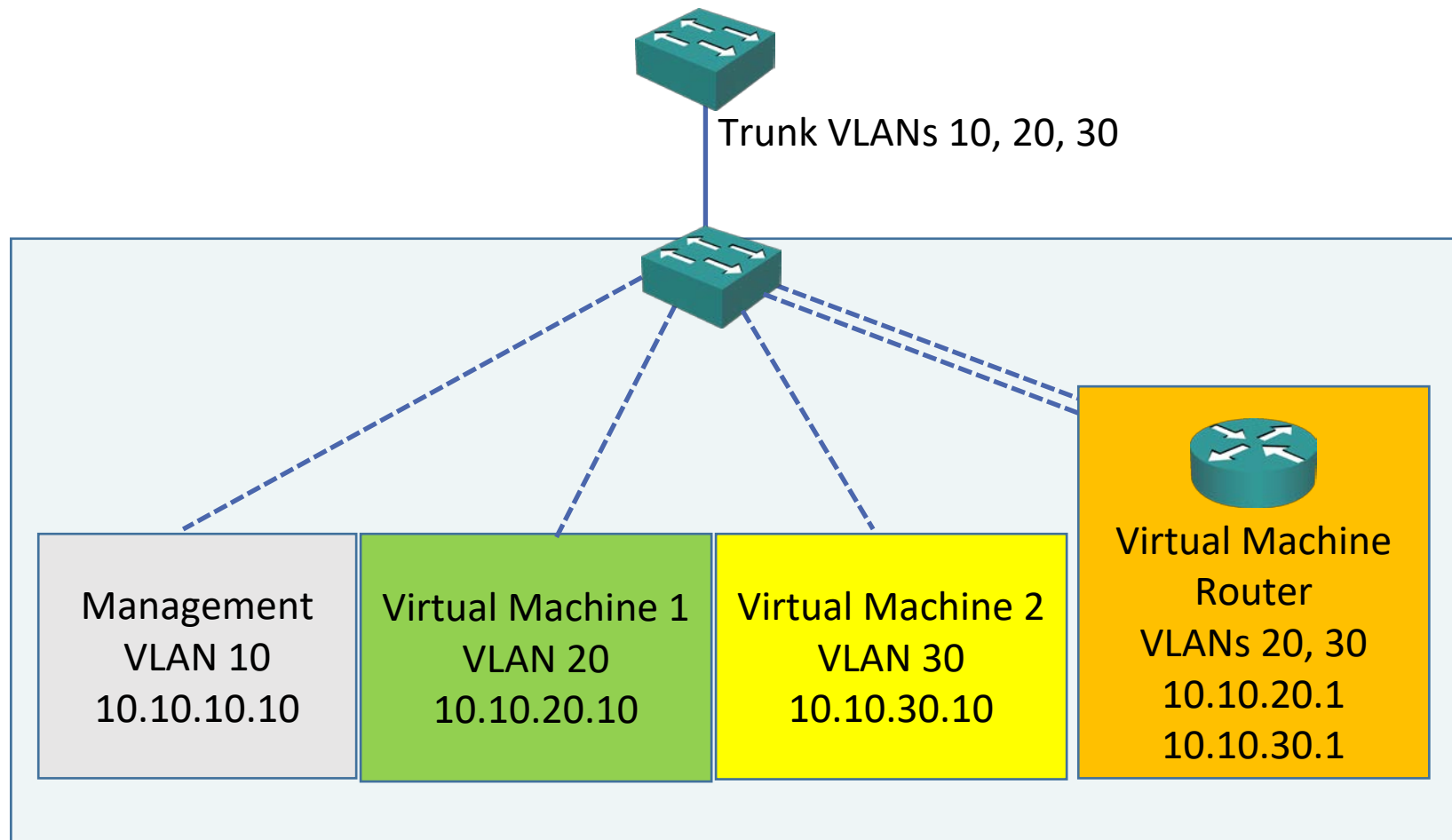
# Traditional Switched Networks



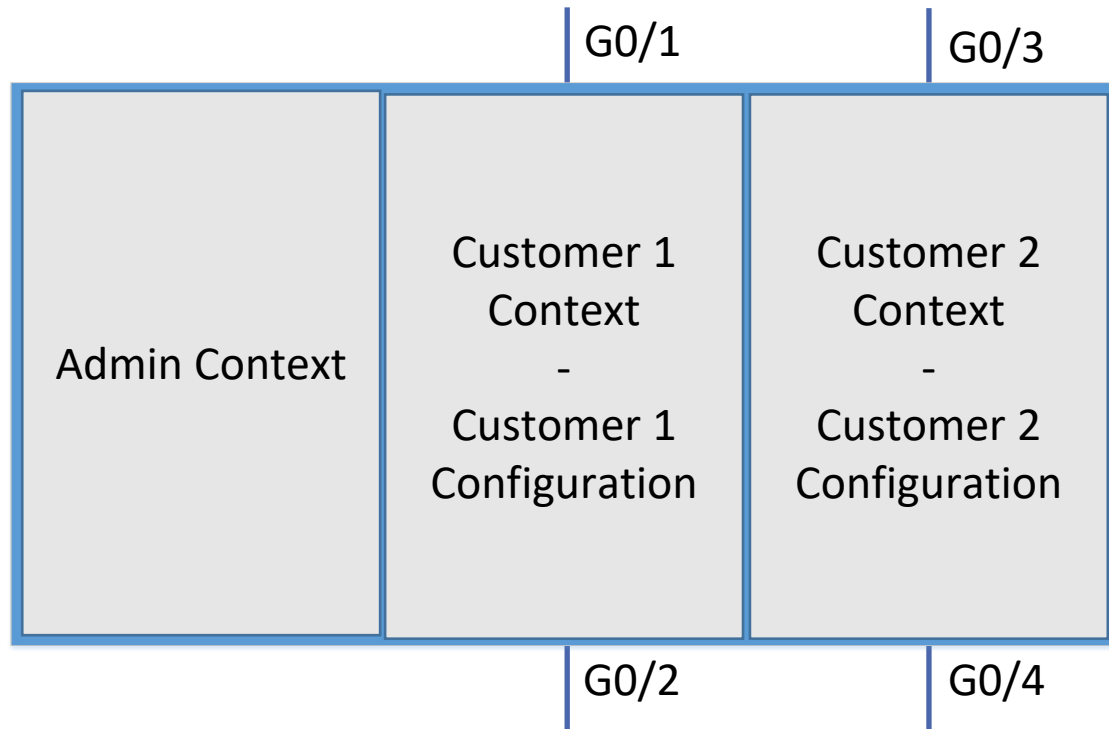
# Virtual Switch eg Nexus 1000V



# Virtual Router eg CSR 1000V



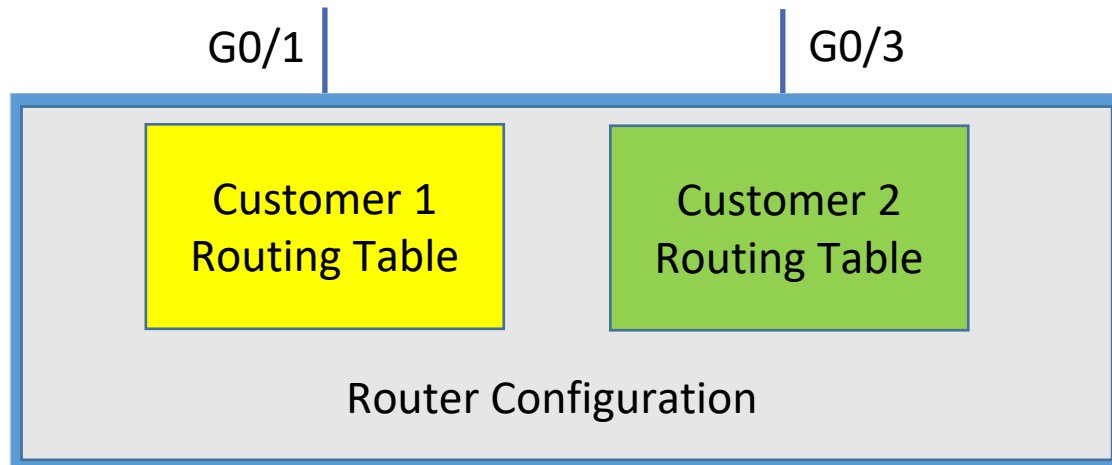
# Firewall Virtualization with Contexts eg ASA



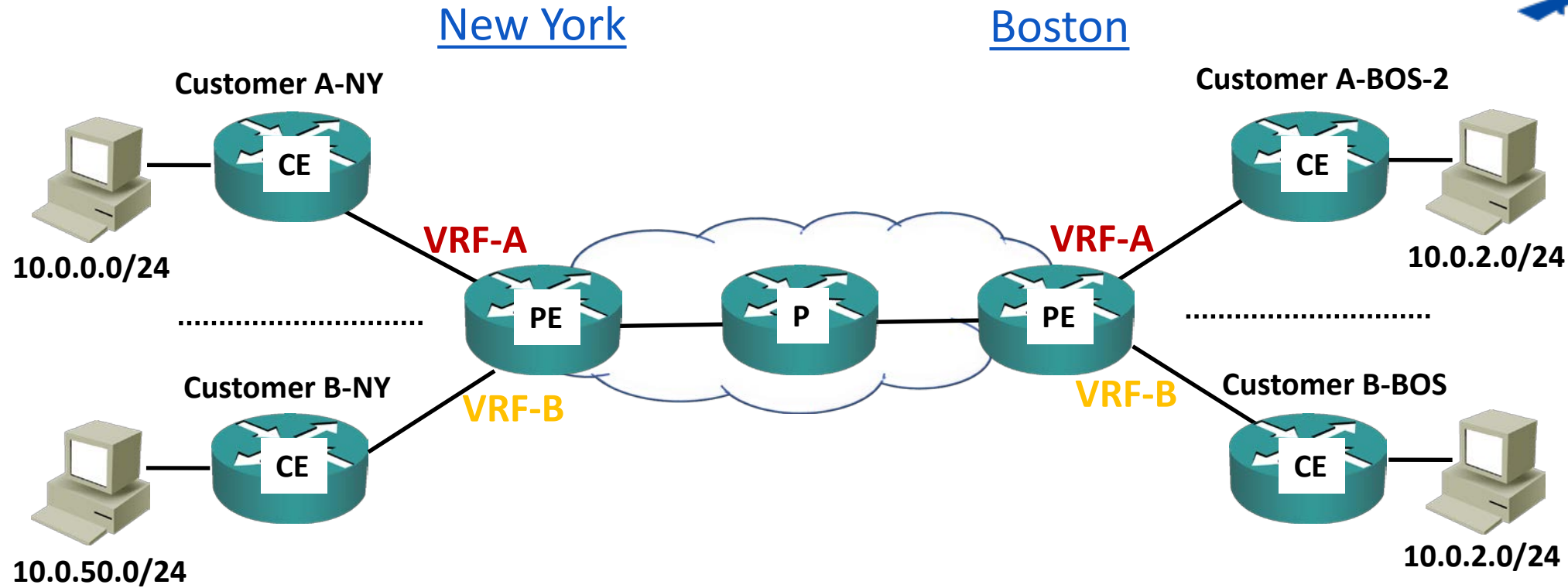
# Router Virtualization with VRF



- Virtual Routing and Forwarding



# VRF Virtual Routing and Forwarding



# Virtualization



- Virtualization supports running multiple virtual systems on a single physical system
- This provides flexibility and reduces costs
- Redundancy is supported by adding multiple physical systems which each have virtual systems running on them

# Clustering



- Clustering supports combining multiple physical systems into a single virtual system
- This provides redundancy and increased performance

